



*Motion*Systems

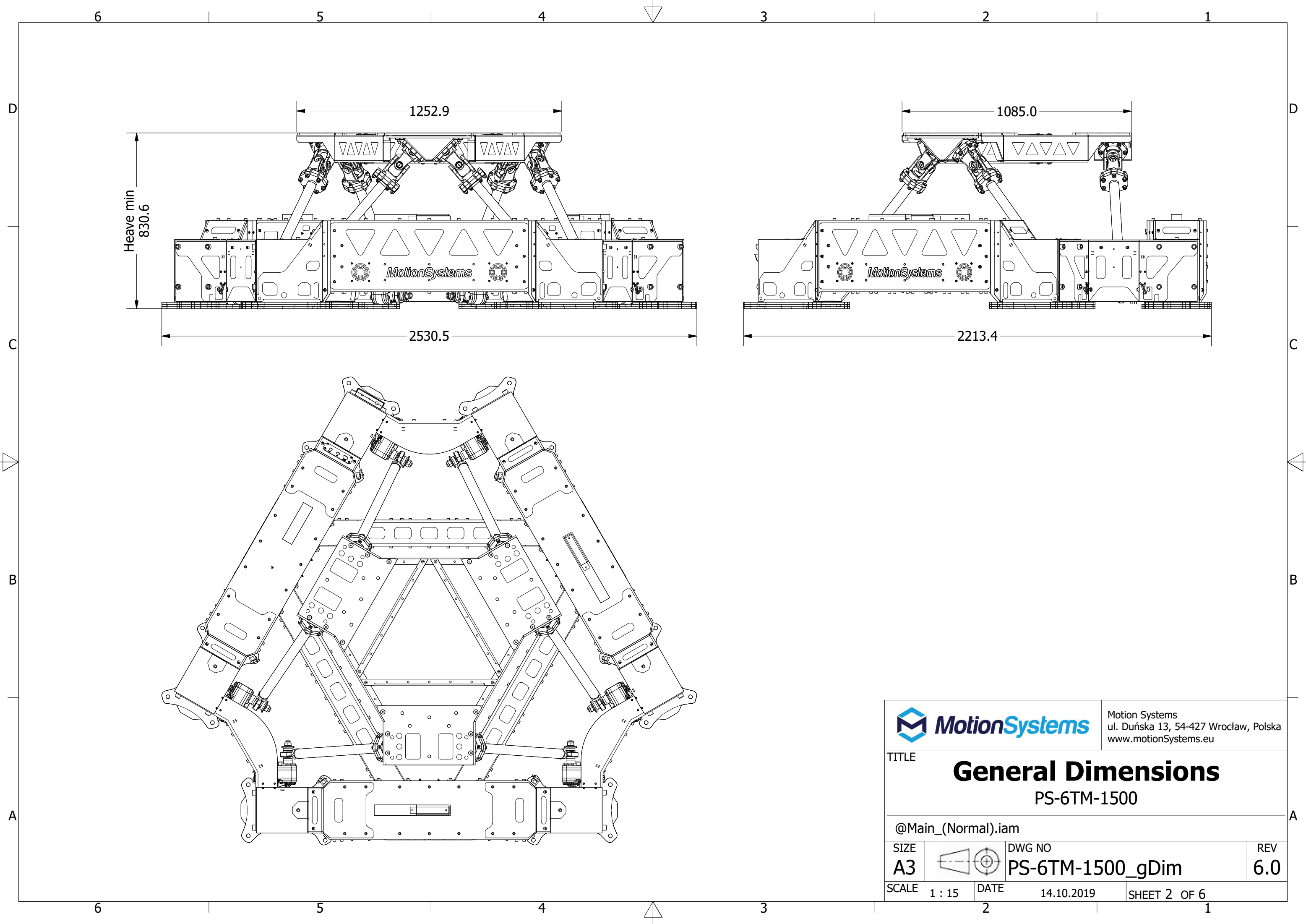
Technical documentation
PS-6TM-1500
General dimensions


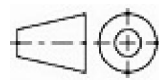
RESERVED AND CONFIDENTIAL

THE INFORMATION CONTAINED IN THIS DOCUMENTATION IS PROPERTY OF MOTION SYSTEMS COMPANY. ANY REPRODUCTION OF PARTS OR WHOLE WITHOUT WRITTEN PERMISSION IS PROHIBITED.

ZATRZEŻONE I POUFNE

INFORMACJE ZAWARTE W TEJ DOKUMENTACJI SĄ WŁASNOŚCIĄ FIRMY MOTION SYSTEMS. WSZELKIE REPRODUKCJE CZĘŚCI LUB CAŁOŚCI BEZ PISEMNEJ ZGODY SĄ ZABRONIONE.



		Motion Systems ul. Duńska 13, 54-427 Wrocław, Polska www.motionSystems.eu	
TITLE		<h1>General Dimensions</h1> <h2>PS-6TM-1500</h2>	
@Main_(Normal).iam			
SIZE		DWG NO	REV
A3		PS-6TM-1500_gDim	6.0
SCALE	1 : 15	DATE	14.10.2019
		SHEET 2 OF 6	

6

5

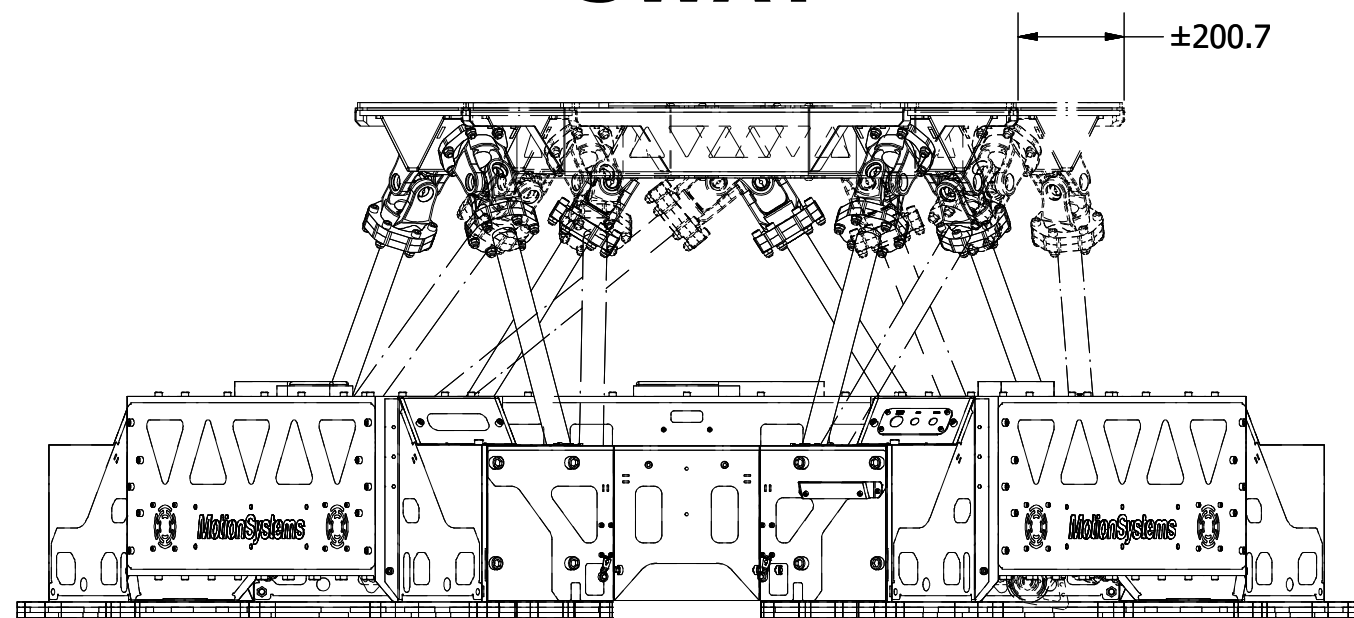
4

3

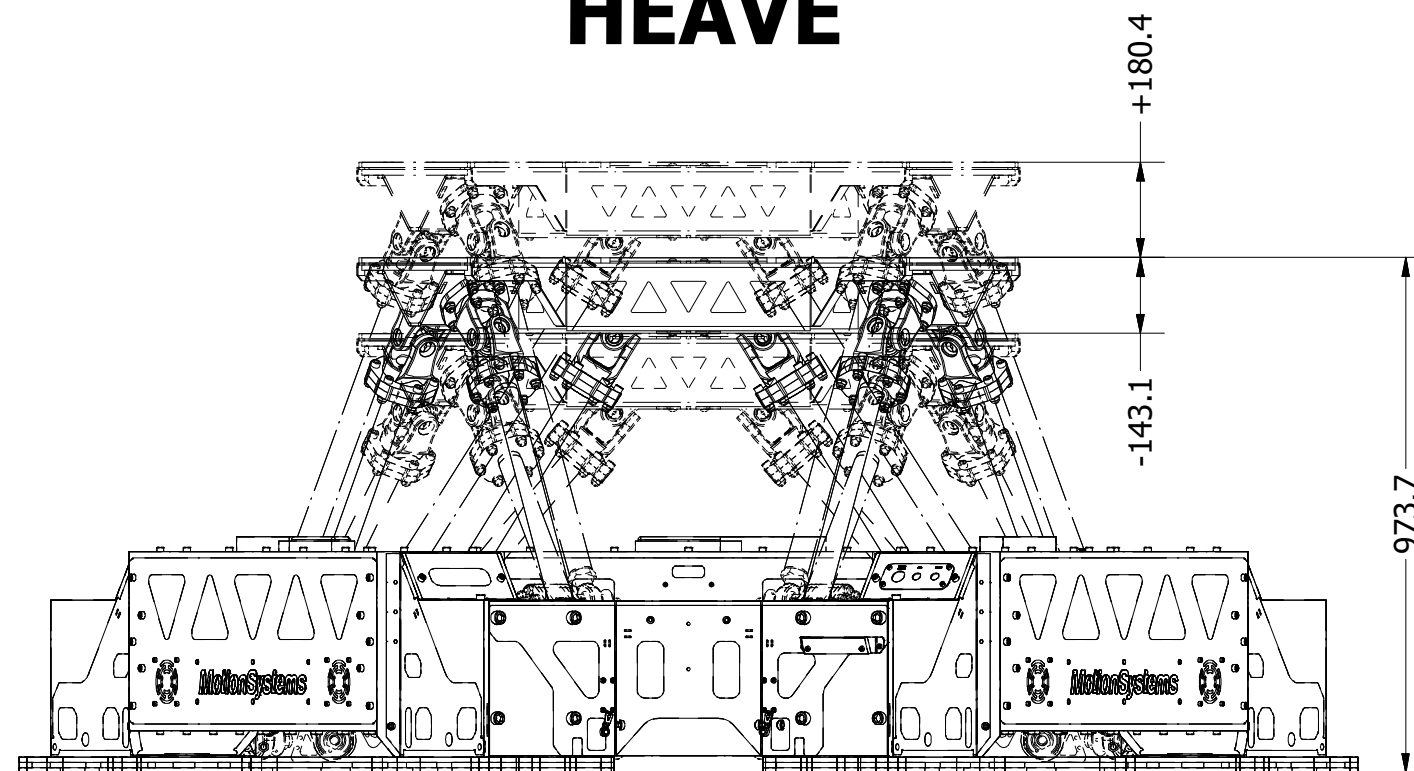
2

1

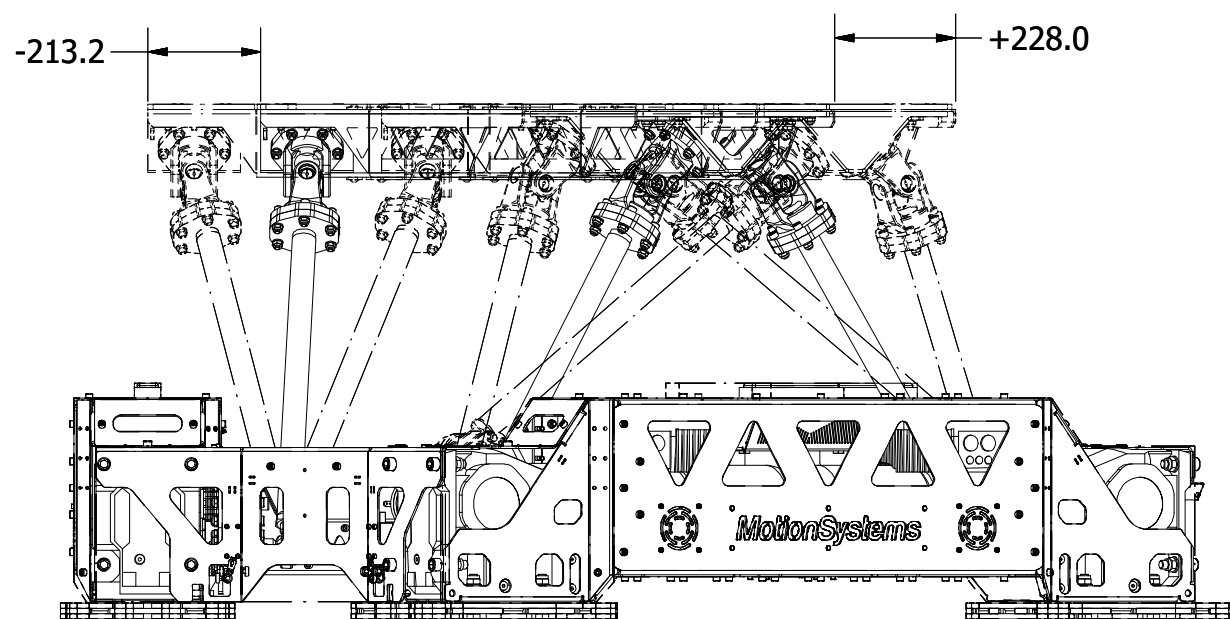
SWAY



HEAVE



SURGE



Motion Systems
 ul. Duńska 13, 54-427 Wrocław, Polska
 www.motionSystems.eu

TITLE

Single Excursions

PS-6TM-1500

@Main_(Normal).iam

SIZE

A3

DWG NO

PS-6TM-1500_gDim

REV

6.0

SCALE

0,07 : 1

DATE

14.10.2019

SHEET 3 OF 6

6

5

4

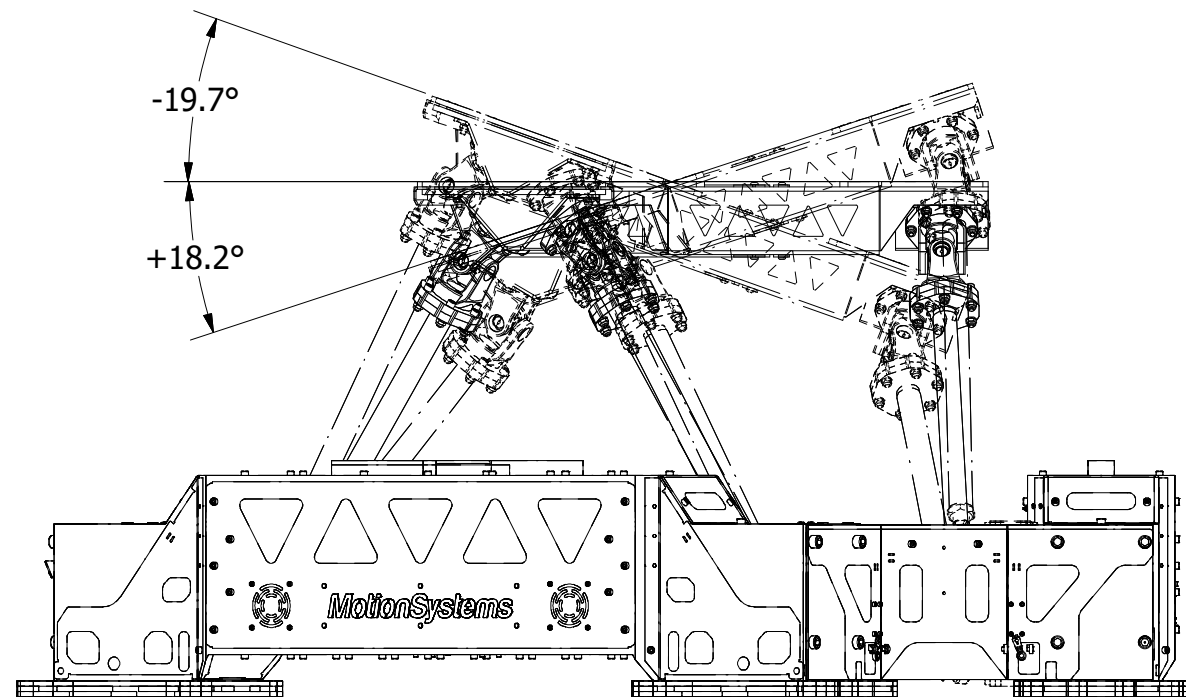
3

2

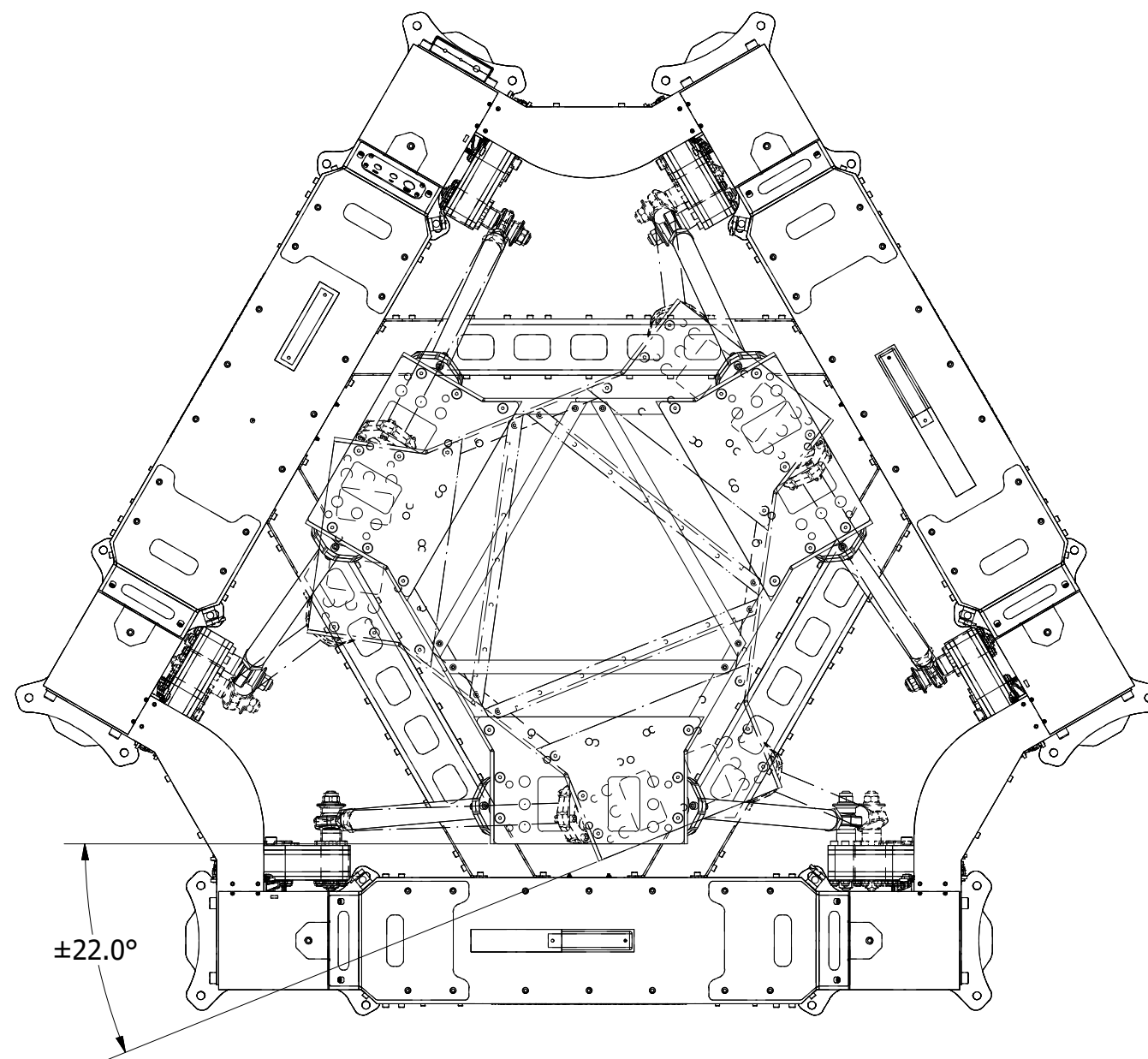
1

6 5 4 3 2 1

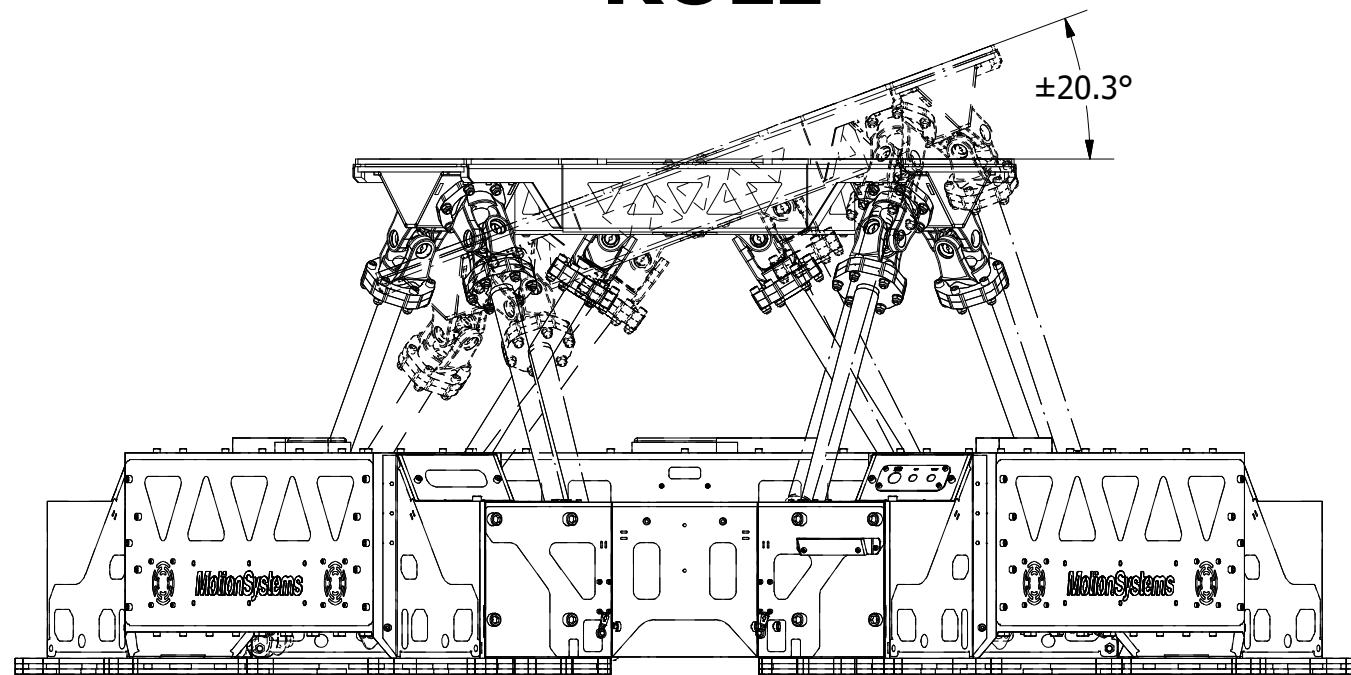
PITCH



YAW



ROLL



D

D

C

C


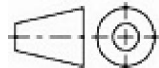
B

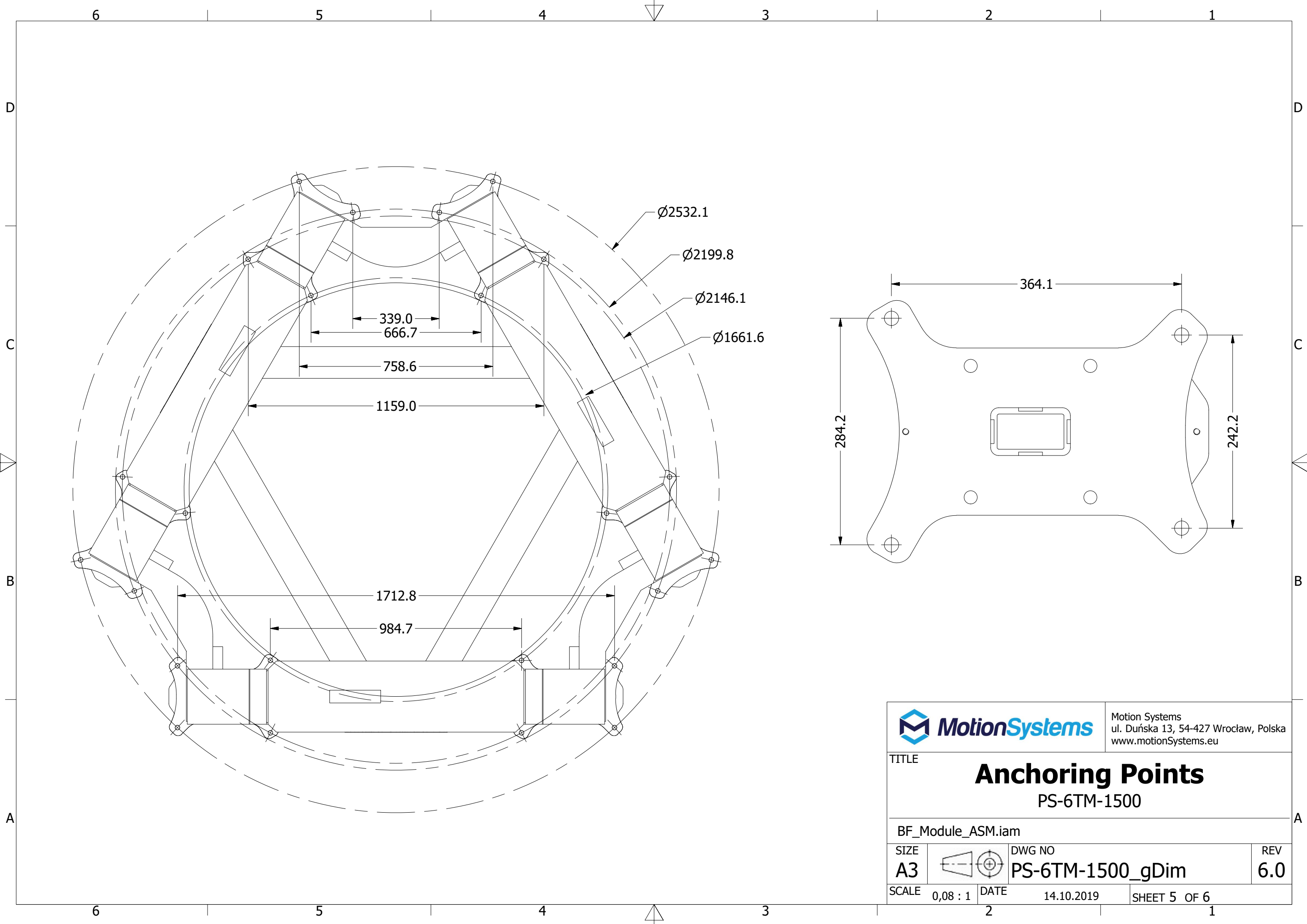
B


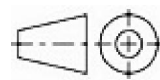
A

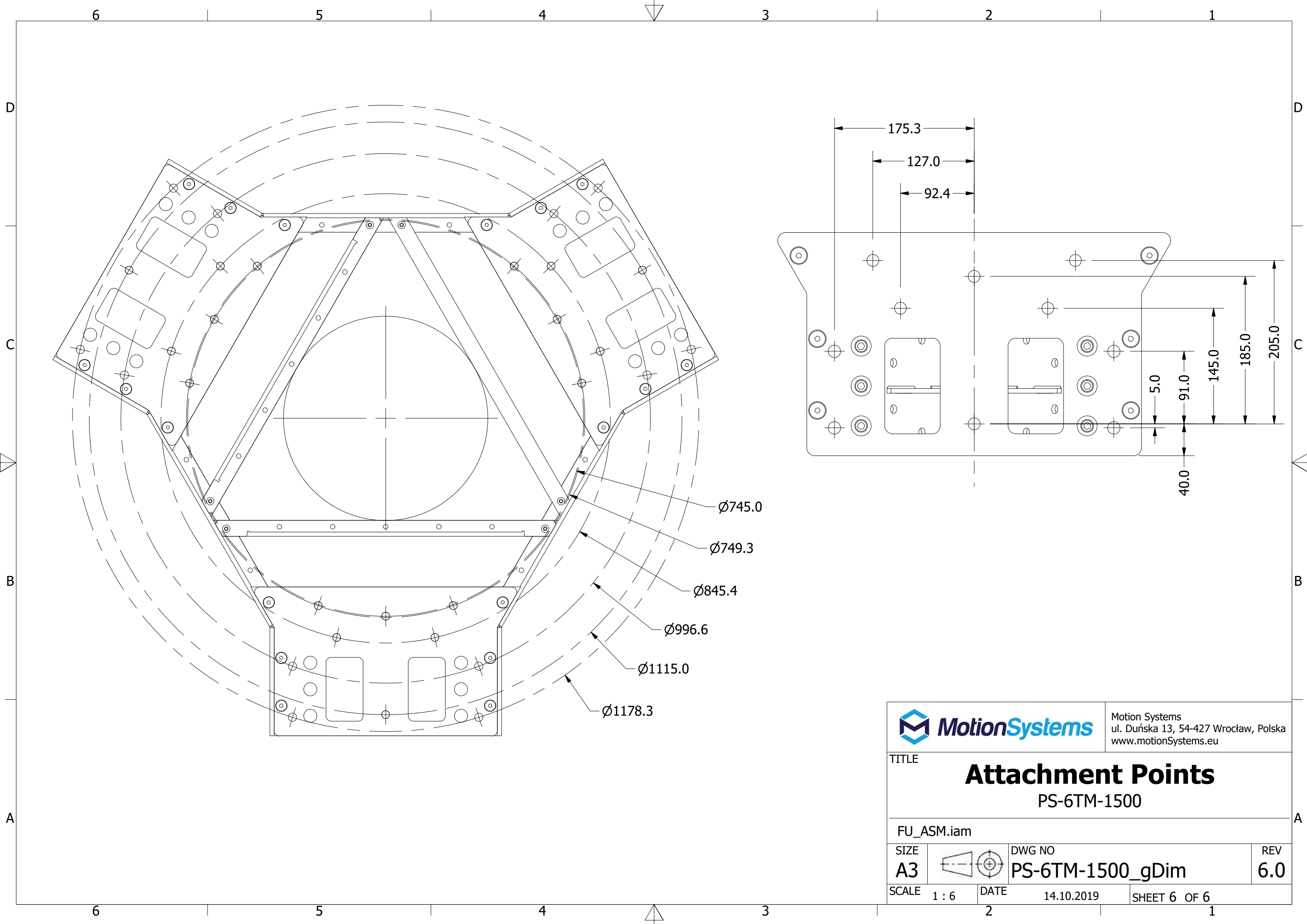
A

6 5 4 3 2 1


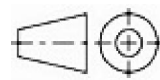
		Motion Systems ul. Duńska 13, 54-427 Wrocław, Polska www.motionSystems.eu	
TITLE			
<h2>Single Excursions</h2> <h3>PS-6TM-1500</h3>			
@Main_(Normal).iam			
SIZE		DWG NO	REV
A3		PS-6TM-1500_gDim	6.0
SCALE	0,07 : 1	DATE	14.10.2019
		SHEET 4 OF 6	



		Motion Systems ul. Duńska 13, 54-427 Wrocław, Polska www.motionSystems.eu	
TITLE <h2 style="text-align: center;">Anchoring Points</h2> <h3 style="text-align: center;">PS-6TM-1500</h3>			
BF_Module_ASM.iam			
SIZE A3		DWG NO PS-6TM-1500_gDim	REV 6.0
SCALE 0,08 : 1	DATE 14.10.2019	SHEET 5 OF 6	



$\varnothing 745.0$
 $\varnothing 749.3$
 $\varnothing 845.4$
 $\varnothing 996.6$
 $\varnothing 1115.0$
 $\varnothing 1178.3$

		Motion Systems ul. Duńska 13, 54-427 Wrocław, Polska www.motionSystems.eu	
TITLE <h2 style="text-align: center;">Attachment Points</h2> <h3 style="text-align: center;">PS-6TM-1500</h3>			
FU_ASM.iam			
SIZE A3		DWG NO PS-6TM-1500_gDim	REV 6.0
SCALE 1 : 6	DATE 14.10.2019	SHEET 6 OF 6	